

Rolling bearings  
Plain bearings  
Linear technology  
**Coating**

**FAG**

# Insutect A

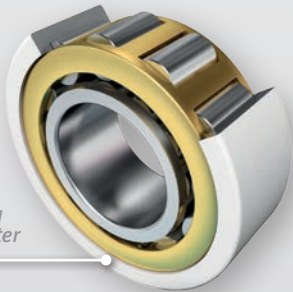
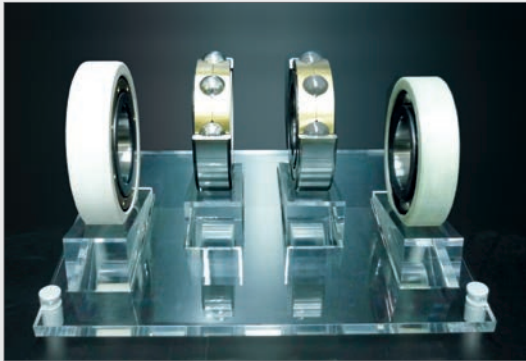
## Insulation Coating J20G



**SCHAEFFLER**

INSUTECT A

# Insulation Coating J20G



*Current-insulating  
coating on the outer  
ring*

## Product features

Ceramic coating on the outer ring

## Technical advantages

- High capacitive resistance
- High wear resistance
- Cost-effective solution for preventing damage due to the passage of current
- Quick solution for problems with the passage of current

## Customer benefits

- Reduced maintenance costs
- Reduced risk of bearing damage caused by current
- Increased operating life of grease

## Performance data

- Disruptive strength of up to 5000V DC
- Coating thickness  $\geq 700 \mu\text{m}$
- Suitable for wet and dry conditions
- From 70 mm OD

## Applications

The same dimensions and tolerances as standard bearings